



# 2023 CHEVROLET N400

## TAILORED FOR YOUR BUSINESS



Load Capacity: Cargo 750 kg and Passenger 685 kg, area volume and accessories kits will provide great versatility and thousands of possibilities to grow

### PERFORMANCE



## TAKE ANYTHING WHEREVER YOU WANT

- Load Capacity: Cargo 750 kg and Passenger 685 kg
- 1.2L engine (gasoline)
- 5-speed manual transmission
- 45L gas tank capacity
- 3.3 m3 cargo area volume
- McPherson front suspension
- Power: 81 HP Torque: 108 lb-ft

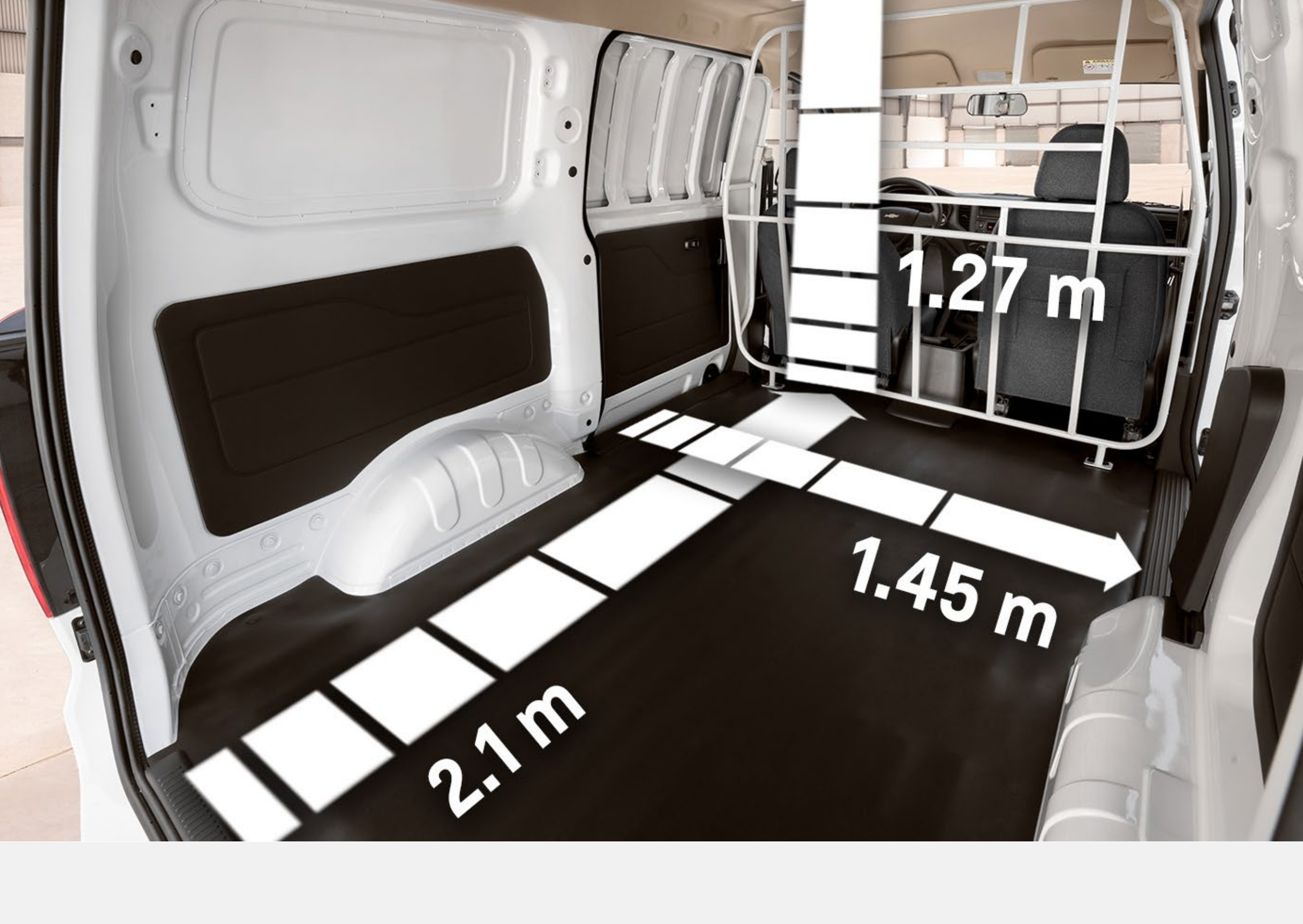
### EXTERIOR PERFORMANCE



## THE IMAGE OF SUCCESS

- 14" steel wheel
- Halogen headlamps with height adjustment
- Black side-view mirrors
- Black exterior door handles

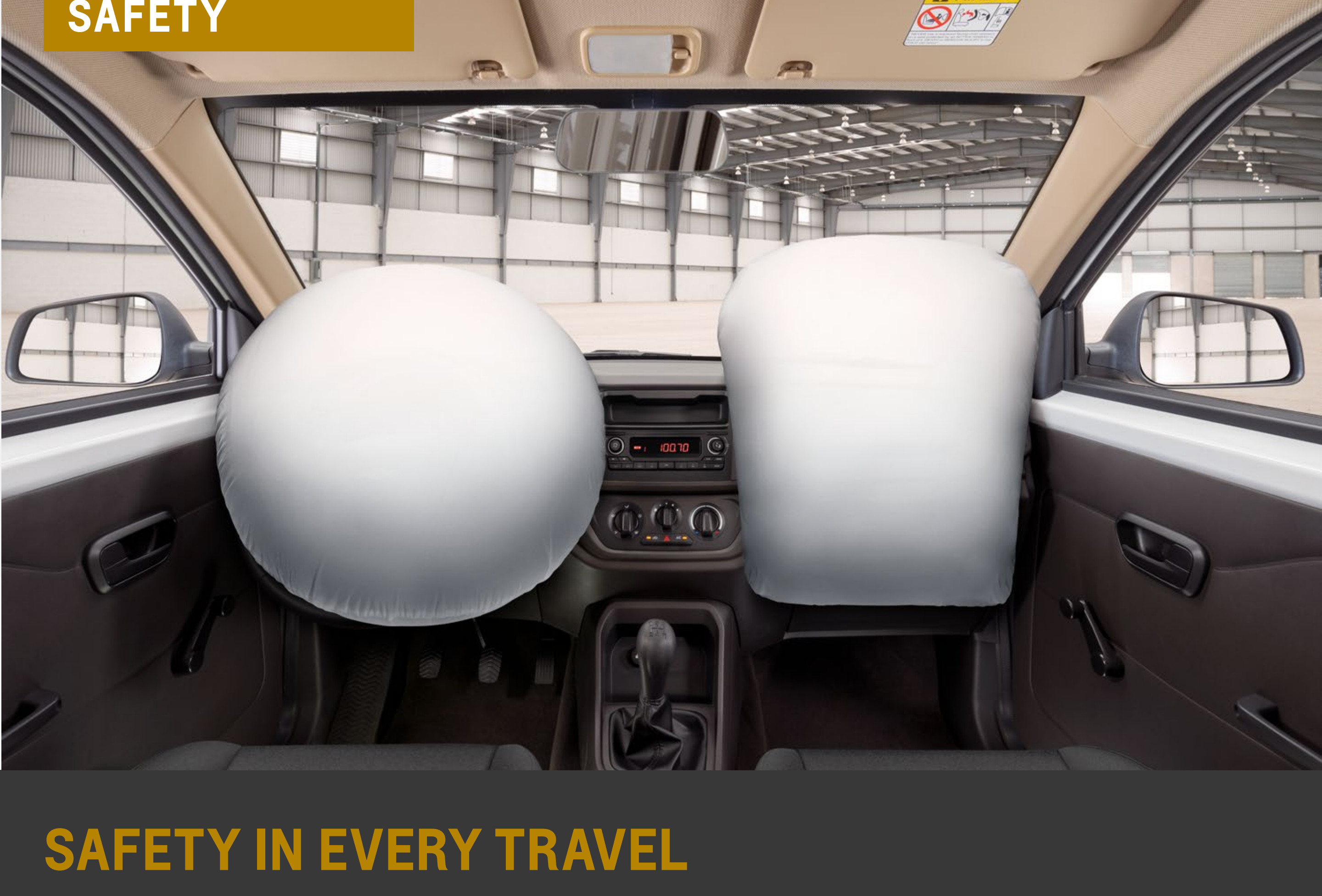
### INTERIOR



## 100% VERSATILE, PRACTICAL, AND FUNCTIONAL

- AM/FM radio with USB port
- Air conditioning
- Monochromatic instrument panel with digital watch
- Cloth-covered seats
- 2 cup holders
- Adjustable headrests on seats
- Day/night adjustment rear-view mirror
- 2 speakers

### SAFETY



## SAFETY IN EVERY TRAVEL

- 2 airbags (driver and passenger)
- Disc brakes on front wheels and drum brakes on rear wheels with ABS and EBD
- Power door locks (cargo package only) and manual windows on 2nd row (passenger version only)
- Antitheft alarm (cargo package only)
- 3-point seat belts with pretensioners

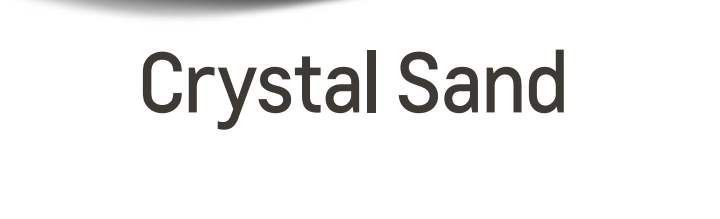
## THE PERFECT ALLY FOR YOUR BUSINESS

Enhance the results of your equipment with the new 2023 Chevrolet N400 line and its factory integrated benefits. The comprehensive solutions and management services of the Chevrolet Fleet Services has competitive and nationally standardized costs, as well as a wide portfolio of vehicles ready to multiply ever success in your business. Please ask your account manager.

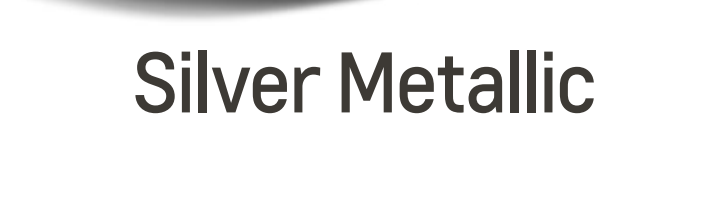
### EXTERIOR COLORS



Snow White



Crystal Sand



Silver Metallic

These images are for illustrative purposes only. Please see availability of colors in your country.

\*Fuel performance information refers to the value obtained under controlled laboratory conditions, in accordance with the methodology of NOM-163-SEMARNAT-ENER-SCFI-2013, which may not be replicable or obtainable under conventional driving conditions and habits, due to weather, fuel, topographical conditions and other factors.

FIND NEW ROADS™



FLEET SERVICES

This catalog is for exclusive use of the Chevrolet Authorized Distributors salesforce and is not meant for the final client's use and/or consultation. Complete or partial reproduction of this catalog is strictly prohibited through any type of medium, including electronic. The colors of the accessories shown in this catalog could differ from the accessories provided by General Motors de México, S. de RL. de CV (GMM) to its Chevrolet Authorized Distributors network. The characteristics, pictures, models, appearance, specifications and/or descriptions of the accessories contained in this catalog may be updated, discontinued, or modified by GMM from time to time with no previous notice and are subject to availability. Applies only for Chevrolet vehicles of the year and model specified on the description of each accessory. Accessories Warranty: Chevrolet accessories have a 12-month or 10,000-kilometer warranty (whichever occurs first) when the accessories are installed by a Chevrolet Authorized Distributor, and for 12 months only when they are not installed by a Chevrolet Authorized Distributor.